



REAL DIRILLING SERVICES
COMPANY

Let us introduce Ourselves!

Nadin Petro Core Co. (NPC) as a Drilling services company established to concentrate specifically in coring services.

NPC by considerable investment in equipment and tools of the latest technology and state of arts and also recruitment of highly qualified personnel has been able to successfully undertake important projects.

NPC's workshop located in Kish Island free zone with complete up-to-date facilities and equipment. We would be more than glad to supply anymore information that you feel you may desire.



"We were ready to serve you 24/7 with highest quality equipment, people and service level..... at a competitive price"

"Welcome to the NPC"

Nadin Petro Core Co. has established a Quality Management System based on the requirements of ISO 29001.

We are aggressively committed to maintain and develop our quality system, primarily since we intend to be ranked as the "best" in our business.

The objectives of the NPC management system are closely related to:

1. Recognizing who our clients are and what they want, through open communication.
2. Understanding the requirements of our jobs and the systems that support us through training.
3. Making continual improvement in every job through the use of team synergetic cooperation.
4. Ensuring that in practice we follow our policy and procedure manuals in letter and spirit.

As Managing Director, I am fully committed to ensuring the implementation and continual improvement of this quality management system. The Quality Policy is a live document, and is reviewed at regular Management Review meetings.

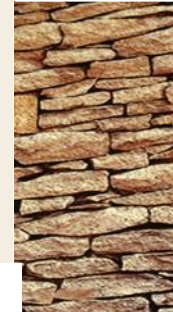
Contact us at

Tel: (+9821) 43649000

Fax: (+9821) 88629623

Web Site: www.npc-core.com

Or on the E-mail at info@npc-core.com



Your NPC Specialist

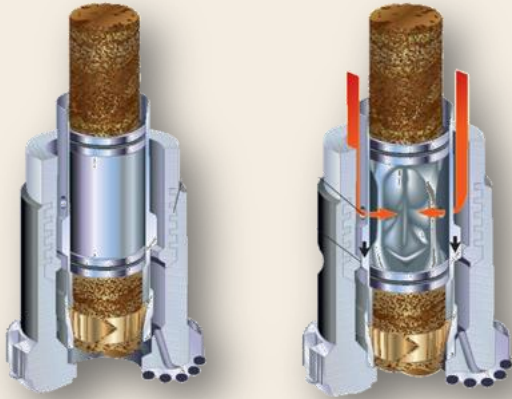
Opening Doors For Contractors Like You



Oriented Coring System



Unconsolidated Coring System



Workshop Address:

Blocks 76-77, Naft Street, Industrial Phase 3, Kish Island, Iran.

2nd Door of Ebtekar 2 Street, Industrial mini city 3, Ahvaz, Iran

Sample Gamma Logging >>>



Our Company Coring Equipment

Conventional Coring Tools >>>

1. Core Barrel 26', HDT
2. Spiral Integral Stabilizer HDT
3. Slick Stabilizer
4. Swivel Assembly
5. Adjustable Safety Joint Assembly HDT
6. Telescopic Shoe Assembly
7. HDT Core Catcher
8. Circulating Sub
9. Core Shear Boot
10. Inner Tube Extension
11. Core Cradle

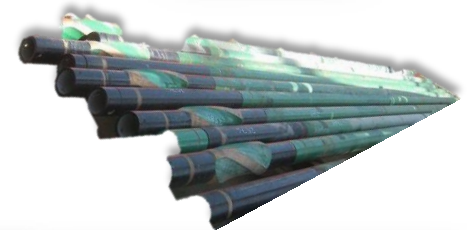
Oriented Coring Tools >>>

1. Female Mule Shoe
2. Stinger
3. Scribe Knife
4. Protractor
5. Swivel Lock Clamp
6. High Point Device

Jam Indication System >>>

1. Hydro Seat Barrel

*** NPC company with more than enough equipment has ability to implement 4 coring Jobs in 8-1/2" & 5-7/8" sizes simultaneously.



Cutting & Packing Sample >>> Pneumatic Saw Box >>>



Low Invasion™ Coring>>>

Low Invasion™ Coring delivers a core sample untouched by drilling fluid, which avoids chemical alteration and enables advanced core analysis. The system includes low invasion core heads, plug taking and trimming, plus tracing to measure any mud invasion. Procedures for tripping out and preserving plugs also prevent mechanical damage and atmospheric exposure.

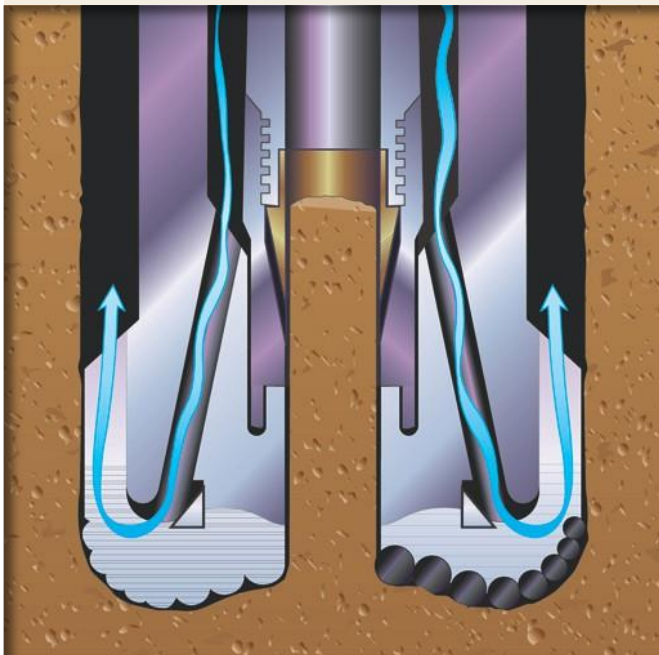
Advantage>>>

The Internal Lip seals off the core from nearly all of the drilling fluid.

Angled Discharge Ports direct fluid flow away from the core and create a flow pattern that vacuums the cuttings away from the bit face, which is called the Venturi Effect. This powerful hydraulic effect significantly increases rate of penetration, which reduces the time the core is exposed to drilling mud.

The Flush I.D. allows a protective filter cake to form around the core, preventing further invasion. The small amount of drilling fluid that is allowed to pass into the throat creates a film of filter cake that holds the core together and creates an impervious barrier.

The smooth I.D. also prevents tiny diamond fragments found in oil from disrupting filter cake formation.



Electronic Survey System (ESS)

Oriented Coring Surveying System>>>

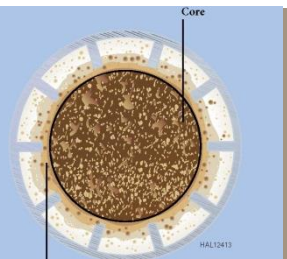
An important tool which allows the core analysis to be conducted knowing how the core is oriented in the ground. Data provided from ESS allow a better understanding of the structure shape and properties of formations. This helps to reduce the number of wells needed to be drilled for structure appraisal. Electronic Survey System to obtain orientation data for a primary groove on the core.



Near Future Goal >>>

Sponge Coring

Sponge Coring provides the most realistic petrophysical data, essential for planning enhanced oil recovery and identifying oil zones and mobile oil zones. Sponge coring allows measurement of in-situ conditions, oil and water saturation, permeability, capillary pressure, and gas saturation.



The sponge liner recovers oil escaping from the core when tripping out of the hole, which enables analysts to reconstitute better native state conditions.